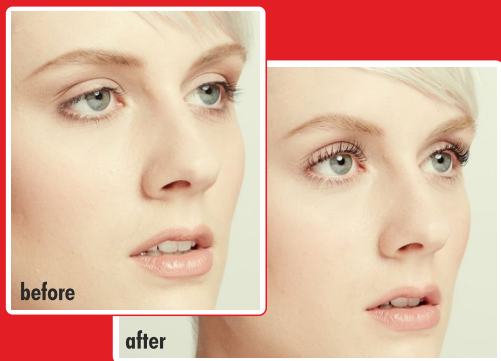


INSTRUCTIONS FOR USE



The way to
perfect lashes in **3** steps:
Lifting - Tinting - Lamination

1. STEP

Wimpernwelle Lash Lifting CLASSIC



Training video:
www.wimpernwelle.com
→ VIDEOS



made in Germany

1 Before starting the treatment please ask regarding existing allergies against ingredients, e.g. Latex allergy concerning the special glue. Contact lenses are to be removed before treatment.



2



Then use a make-up pad to carefully remove eye make-up and mascara by using an oil-free make-up remover.

NOTE: In case of water-proof mascara use an oil in water based make-up remover, e.g. **Special Make-up remover** (art. no. 10361).



3 Afterwards eyelashes and eyelid **must** be degreased by using **Sodium Chloride solution** (art. no. 10330). This is the only way to guarantee, that the roll will not detach from the lid during treatment and the lashes will adhere well to the roll.



(INFORMATION: Our Sodium Chloride solution will keep longer by preservation)



4 Comb the eyelashes with the **mascara wand** (art. no. 10369) in order to align any criss-crossed lashes prior to the treatment.



5 Choose a suitable self-adhesive **Lifting roll** (Eyelash roll): The more you want to lift the eyelashes, the smaller you select the roll.

ATTENTION: Ask your customers how intensively they want their lashes to be lifted. Always pay attention to the anatomy of the eye and lid, whether the desired lash lifting can be achieved.

TIP Also longer lashes can be lifted with smaller rolls; the lifting effect will then be accordingly stronger.



Carefully bend the roll to fit the shape of the eyelid.

IMPORTANT: Handle the roll only at the ends so it does not lose its adhesiveness.



7 **IMPORTANT:** From now on the eyes have to remain closed until the end of the treatment.

WARNINGS - more treatment and material notes: For professional use only. Store product in a cool place. Avoid contact with eyes. In the event of contact with eyes, rinse immediately with plenty of water and seek medical advice. Wear suitable gloves. Keep out of reach of children.

Wimpernwelle

8



Hold the Lifting roll in front of the eyelid and mark the outer edge of the eyelid.
Cut the roll right there if it is too long and lifts away from the outward edge: The Lifting roll must not stick out sideways from the lid's outer edge.

10



Fix the roll and continue placing it **above** the eyelid margin towards the outside of the eye.
IMPORTANT: Do not place the roll too low in order to avoid that the eyelashes will be pressed downwards by the roll. Otherwise the curve will be too close to the tips of the eyelashes!

9



Stretch the lid slightly while eyes are closed, hold the roll at one end and place the other end on the edge of the eyelid in the corner of the eye.
TIP: Previously, you can fix the upper lid upwards for the entire treatment with the **medical tape** (art. no. 10340) - e.g. for drooping eyelids.

11

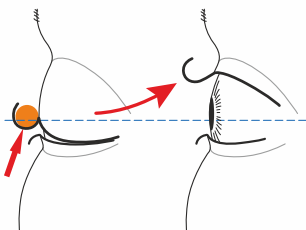


ATTENTION: Finally check the position of the fixed rolls.
The eyelid margin must be visible!

TIP The more of the lid margin is showing the more the lashes are being lifted close to their roots. This will produce a **stronger lifting result**.

ATTENTION - Place the Lifting roll correctly:

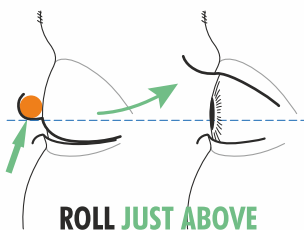
WRONG - Curl!



→ **ROLL IS TOO LOW!**

(Eyelashes go down from the roots)

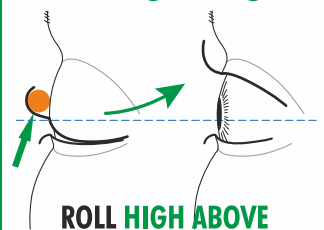
Soft curve



ROLL **JUST ABOVE**
EYELID MARGIN

(Eyelashes go straight from the roots)

Strong lifting



ROLL **HIGH ABOVE**
EYELID MARGIN

(Eyelashes go up from the roots)

Wimpernwelle

12



Using the wooden stick, raise and gently press the eyelashes one by one evenly and straight from the outer corner inwards onto the self-adhesive Lifting roll.



15

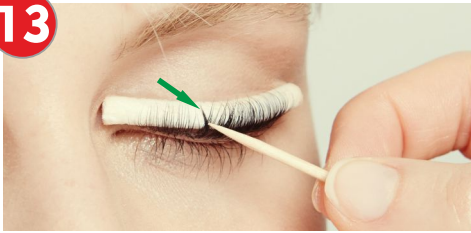


IMPORTANT: Finally pull the lower lid downwards to make sure no lower lashes adhere to the roll!

If any lower lashes still adhere to it, they must be removed with the wooden stick.



13



ATTENTION: If any lashes were fixed criss-crossed or crooked, they **must** be separated and newly aligned. Remove them with the wooden stick and refix them.



16



Apply GEL 1 **generously** with the modelling brush. Begin approx. 1 mm above the eyelash roots and stroke the GEL **up to the horizontal strip** of the roll.



14



Should any eyelash not adhere apply a small amount of the **special glue** (art. no. 10312) onto a new wooden stick.

Coat the lash tip with the special glue and press it for 5 seconds onto the roll.

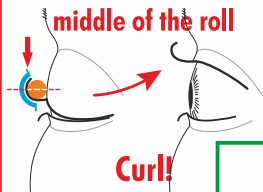
17



IMPORTANT: Never apply GEL 1 to any of those eyelash tips adhering above the horizontal strip of the roll so these will not be formed as well (curl).

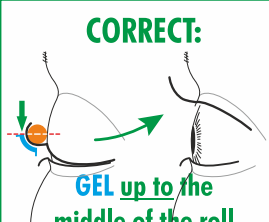
ATTENTION: Remember that the eyes must remain closed during the whole treatment.

WRONG: GEL above the middle of the roll



Curl!

CORRECT:



GEL up to the middle of the roll

20



With the eyes still closed apply GEL 2 just like GEL 1.

Exposure time of GEL 2 is 8 minutes!



GEL 2 8 min!

18



GEL 1 only 12 min!
(if needed 15-18 min)

Exposure time of GEL 1 is 12 min.

IMPORTANT: In case of very firm or stubborn lashes the exposure time must be extended to 15 - 18 minutes.

21

Then take off GEL 2 with a dry make-up pad.



Now moisten a make-up pad with the especially designed **Glue & Roll Remover** (art. no. 10336). While eyes are closed, remove special glue and rolls by rubbing gently.

19



Remove GEL 1 with a dry make-up pad or cotton bud.

IMPORTANT: Check if during treatment any lashes have detached from the roll. You must now first re-gluce them with the **special glue**.

22



Stretch the lid and carefully roll the rolls downwards with the moistened pad.

Finally, wipe with water over the eyelid and the lashes to remove any glue residue. If needed, help along with a Lash Brush.

23 **2. STEP:** Tint the eyelashes immediately after the Wimpernwelle Lash Lifting. This makes the lifting effect clearly visible to the customers!

ATTENTION: Exposure time of **BINACIL™** directly after a Lash Lifting treatment is **only 2 min!**



To find out how fast and easily lashes can be tinted with **BINACIL™ Eyelash & Eyebrow Tint**, we offer a **Test Kit** with 2 colours (art. no. 23905).



24 **3. STEP:** The professional **KERATIN** conditioner helps to revitalize the eyelash structure:

LAMINATION FLUID *professional*

will replenish damaged lashes, makes them strong and gives them a lustrous finish!

KERATIN BOOSTER

is a high-end fluid with Keratin, Silk proteins, Wheat proteins and Panthenol.

APPLICATION: With the microbrush (art. no. 10321) cover the eyelashes **generously** from above and below. Do not wash off the FLUID during the following hours!



25



If **no LAMINATION FLUID professional** is used, **VOLUME MAX MASCARA 2.0** can be applied onto the eyelashes (art. no. 30375). It contains conditioning Panthenol.



TIP

For the strengthening of the eyelashes recommend to your clients the use of our conditioning **Eyelash & Eyebrow BALM** (art. no. 30373). Panthenol and Castor Oil will nourish the eyelashes over night and make them smooth.

Or offer the Lash & Brow **LAMINATION FLUID** (art. no. 30371) to continue the **KERATIN** cure at home. It will enhance the repair effect and will give the eyelashes a lustrous finish.



Besides the classic method, there is also the **Wimpernwelle Lash Lifting with pads!**



For this, Wimpernwelle created the **POWER PAD®**, made of skin-friendly Silicone, and with a unique 3D design.
Please ask for further information.

Wimpernwelle
Leaders by experience

Wimpernwelle GmbH · 12247 Berlin · Germany
www.wimpernwelle.com · info@wimpernwelle.com

The flyer is printed



Copyright:
Wimpernwelle GmbH

Stand: 082022 (80317ENG)



WHAT YOU SHOULD KNOW:

Why are eyelashes crimped or swirly after treatment ("pigtail curl")?

1st ERROR:

The Lifting rolls were placed **too low**. Hence the lashes are **at first** pushed downwards which causes that the gel is applied too close to the eyelash tips → Lashes will appear like curled inward!

Roll placed **too low**, edge of lid is not visible:



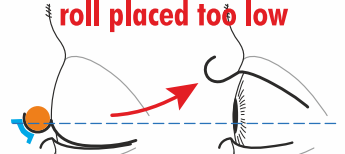
Hence **GEL** and ...

... lifting effect too close to the tips



Crimped or swirly lashes!

WRONG - roll placed too low



GEL too close to the tips
→ **Crimped lashes!**

CORRECT:

Always place the rolls **at least high enough** so you can clearly see the edge of the lid. The higher the rolls are placed, the more the lashes will be lifted starting straight from the lash line (see steps 10 + 11).

Roll placed **higher**, edge of lid is clearly visible



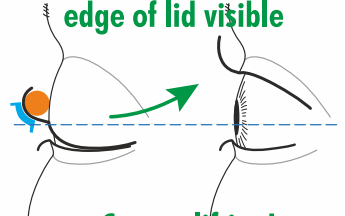
GEL applied closer to lash line,

lifting starts closer to lash line



→ **Strong lifting effect!**

CORRECT - Roll higher, edge of lid visible

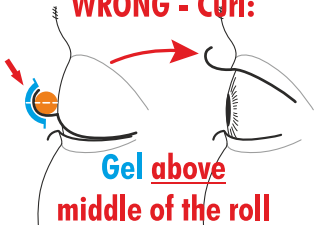


→ **Correct lifting!**

2nd ERROR:

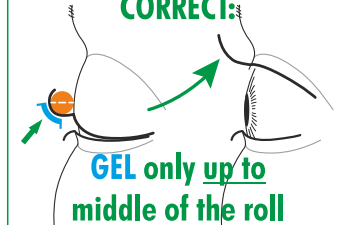
In this case gel was also applied to the tips of longer lashes. This is wrong, because wherever gel is applied, it will take effect and thus reshape the lashes. Therefore, if longer lashes extend above the middle of the roll, never apply any gel there. Otherwise lashes → **will become swirly!**

WRONG - Curl:

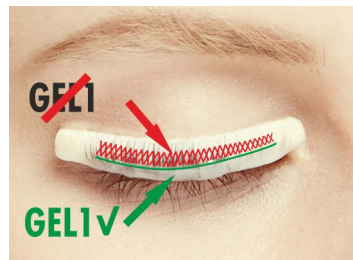


Gel above middle of the roll

CORRECT:



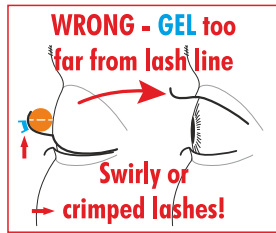
GEL only up to middle of the roll



WHAT YOU SHOULD KNOW:

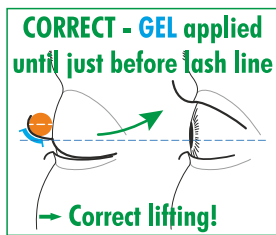
3rd ERROR:

If you used very large Lifting rolls (no. 5 or no. 6) for your treatment, it may happen that the gel is applied too far from the lash line. This will cause the lifting effect to start far too late (only near the tips).



CORRECT:

Especially when using very large rolls, the gel must be applied very close to the lash line so the lashes will be lifted straight away.



What can I do? Please write us an e-mail to learn how to undo swirly eyelashes: info@wimpernwelle.com

Eyelashes are crossed after treatment or become crooked?

Cause: The lashes were not combed before the treatment (Lash Brush!) and/or not pressed onto the Lifting roll in a straight and even manner.

What can I do? The Lash Lifting can be repeated immediately. However, first of all, you must carefully re-align all eyelashes straightly and evenly on the roll.

The Lash Lifting turned out beautifully, but only lasts 1 to 2 weeks!

Cause: The gels only have a limited shelf life (see sandglass on packaging) and will then gradually lose their effect - the lifting will become unstable.

What can I do? Repeat the Lash Lifting treatment immediately with gel of the newest production batch. There is no need to wait.



Find more tips here:
www.wimpernwelle.com → Lash Lifting → Tips